

# Providing Optimum Power To Your Business

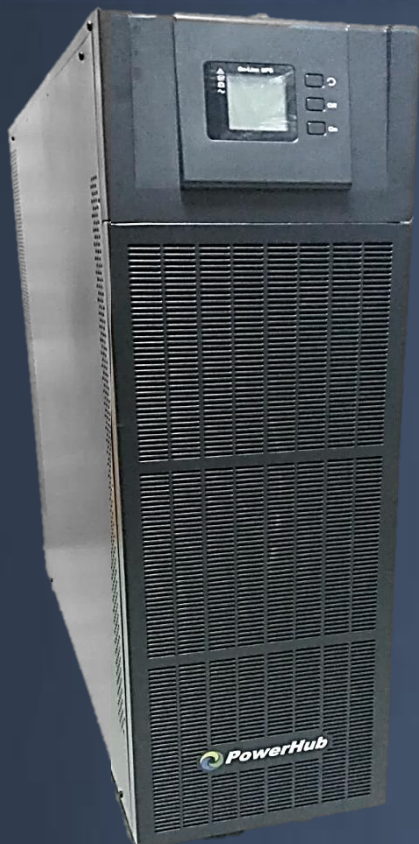


## CLASSIC PRO UPS

- Power rating of 50KVA to 200KVA
- Online Double Conversion with 3 level IGBT inverter topology. Efficiency up to 96%
- Wide input voltage range: 138VAC to 485VAC
- Support 30qty to 50qty of batteries per string
- Output power factor 1
- Support generator input
- Small footprint for a 3 Phase UPS
- Superior overload capability
- Parallel redundancy of up to 6 units
- Support Load Bus Synchronization (LBS) function for 2N system

***Your Power In Safe Hands***

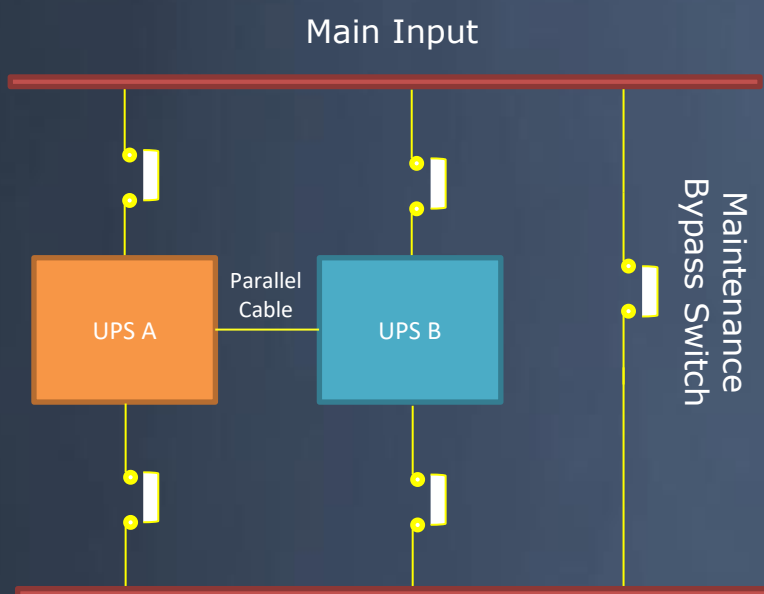
# Only PowerHub UPS saves money and energy without sacrificing availability



**C**lassic PRO series UPS is a high frequency online 3 phase UPS that operates using 3 level IGBT inverter topology. It delivers great performance and value to users who want to take advantage on having maximum power utilization with cost savings in mind. The enhanced features of ECO and parallel redundancy function provide high efficiency and scalability. Designed with high input power factor and low input current harmonic distortion, Classic PRO UPS has the capability to reduce power disturbances and interference to connected loads.

Because of its small footprint design, Classic PRO series UPS caters for users who require more floor area for other equipment in a space demanding environment.

Last but not least, with the advantages of high efficiency, performance and reliability built within this UPS, it provides continuous power protection for network data centers, communication, broadcasting, information processing and even manufacturing industry.



## N + X Parallel Redundancy

To achieve a higher capacity and/or increase reliability, the outputs of up to four UPS systems can be programmed to operate in parallel and the built-in parallel controller in each UPS ensures automatic load sharing.

## Application

- Computer room
- Data center
- Precision instrument
- Intelligent equipment
- Financial & Telecommunications



EXCELLENT PERFORMANCE

HIGH RELIABILITY

BEST QUALITY



### LCD Control Panel

Provides an overview of UPS status and estimated battery runtime.



### ECO Mode

In the case when the load is not so critical, ECO mode can be activated in order to improve the power efficiency. When there is an incoming power failure, the UPS will then transfer from ECO mode to inverter mode and supply power from the battery to the connected load.



**It's about technology working for people rather than people working for technology**



Besides having the usual RS232 interface, the UPS can be monitored and controlled via Dry Contact or Ethernet (SNMP) card. This unique solution allows you to monitor and manage your UPS with a standard Web browser, while simultaneously providing graceful shutdown for multiple computer systems over the network in the event of power failure.

The PowerHub Classic PRO UPS range is dedicated to the electrical protection of your IT networks and loads against power supply problems and electrical disturbances.

## PowerHub Classic PRO Series

MODEL	Classic-Pro 50K-TT (Ext)	Classic-Pro 60K-TT (Ext)	Classic-Pro 80K-TT (Ext)	Classic-Pro 100K-TT (Ext)	Classic-Pro 120K-TT (Ext)	Classic-Pro 150K-TT (Ext)	Classic-Pro 160K-TT (Ext)	Classic-Pro 180K-TT (Ext)	Classic-Pro 200K-TT (Ext)	
Capacity	50kVA / 50kW	60kVA / 60kW	80kVA / 80kW	100kVA / 100kW	120kVA / 120kW	150kVA / 150kW	160kVA / 160kW	180kVA / 180kW	200kVA / 200kW	
Nominal voltage	380/400/415Vac, (3Ph+N+PE)									
Operating voltage range	138~485Vac for 40%load; 305~485Vac for full-load									
Operating frequency range	40~70Hz									
Power factor	≥0.99									
Harmonic distortion (THDi)	≤3% (100% linear load )									
Bypass voltage range	380Vac Max. Voltage: +25%(optional +10%,+15%,+20% ) 400Vac Max. Voltage: +20%(optional +10%,+15% ) 415Vac Max. Voltage: +15%(optional +10% ) Min. voltage: -45% (optional -20%,-30%) Frequency synchronize tracing range: ±10%									
Generator input	Support									
<b>OUTPUT</b>										
Output voltage	380/400/415Vac (3Ph+N+PE)									
Voltage regulation	±1%									
Power factor	1									
Output frequency	1. Line Mode: synchronize with input; when input frequency > ±10% (±1%/±2%/±4%/±5% optional) 2. Output (50/60±0.1)Hz. 3. Battery Mode:(50/60±0.1)Hz									
Crest factor	3:1									
Harmonic distortion (THDv)	≤1% with linear load ≤4% with non linear load									
Efficiency	96%									
<b>BATTERY</b>										
Battery voltage	Optional Voltage: ±180V/±192V/±204V/±216V/±228V/±240/±252/±264/±276/±288/±300Vdc (30/32/34/36/38/40/42/44/ 46/48/50pcs optional); 360Vdc~600Vdc (30~50 pcs, 36 pcs default, 36 to 50 pcs output power factor 1.0 32~34 pcs output power factor 0.9 30 pcs output power factor 0.8									
Charge Current(A)	Max. Current 20A		Max. Current 40A			Max. Current 60A				
<b>SYSTEM FEATURES</b>										
Transfer time	Utility to Battery : 0ms; Utility to bypass: 0ms									
Overload	INV Mode	100% to 110% overload for 60 min; 111% to 125% overload for 10 min; 126% to 150% overload for 1 min; >150% overload for 1.2s								
	Bypass Mode	135% overload with continuous operation; >1000% overload for 100ms before shutdown								
Backfeed protection	Support									
Alarm	Overload, utility abnormal, UPS fault, battery low, etc.									
Protection	Short circuit, overload, over temperature, battery low, fan fault alarm.									
Remote LCD	Support									
Communication	USB, RS232, RS485, Parallel port, Coupler dry contact, Intelligent slot, LBS, SNMP card (optional), Relay card (optional)									
<b>ENVIRONMENTAL</b>										
Operating temperature	0°C~40°C									
Storage temperature	25°C~55°C(no battery)									
Humidity range	0~95% (non condensing)									
IP Rating	IP20									
Altitude	<1500m									
Noise level	<58dB	<60dB	<62dB	<63dB	<65dB	<66dB	<66dB	<68dB	<68dB	
<b>PHYSICAL</b>										
Dimension D×W×H (mm)	828x250x868			850x442x1200						
Net weight (kg)	80	83	154	161	165	190	200	230	232	
<b>STANDARDS</b>										
Safety	IEC/EN62040-1,IEC/EN60950-1									
EMC	IEC/EN62040-2,IEC61000-4-2,IEC61000-4-3,IEC61000-4-4,IEC61000-4-5,IEC61000-4-6,IEC61000-4-8									
Performance	IEC62040-3									

Due to ongoing product improvements, specifications are subject to change without notice.

**APECUS** Technologies Pte Ltd

7030 Ang Mo Kio Ave 5  
#06-50 Northstar@AMK  
Singapore 569880  
Tel: (65) 6570 8068  
Fax: (65) 6570 8066  
Website: www.apecus.com  
Email: sales@apecus.com



Copyright © 2020 APECUS TECHNOLOGIES

All rights reserved

Printed in Singapore

Rev 6.3 – Aug 21